



KONFERENZRAUM THEATER PARLAMENT BLOCK BANKETT U-FORM m² HÖHE MASSE TAGESLICHT ETAGE

KONFERENZZENTRUM 1

| | | | | | | | | | | |
|------------------|-----|-----|----|-----|----|-----|-----|---------|---|----|
| KOPERNIKUS 1 | 100 | 65 | 40 | 72 | 32 | 116 | 3,3 | 16 x 7 | ✓ | EG |
| KOPERNIKUS 2 | 100 | 60 | 40 | 72 | 32 | 112 | 3,3 | 16 x 7 | ✓ | EG |
| KOPERNIKUS 3 | 225 | 105 | 45 | 135 | 42 | 196 | 3,3 | 16 x 12 | ✓ | EG |
| KOPERNIKUS 1 – 2 | 200 | 110 | – | 145 | – | 228 | 3,3 | 16 x 14 | ✓ | EG |
| KOPERNIKUS 2 – 3 | 350 | 165 | – | 205 | 55 | 308 | 3,3 | 16 x 19 | ✓ | EG |
| KOPERNIKUS 1 – 3 | 500 | 250 | – | 280 | 75 | 422 | 3,3 | 16 x 26 | ✓ | EG |
| EINSTEIN 1 | 80 | 40 | 40 | 70 | 30 | 114 | 3 | 16 x 7 | ✓ | EG |
| EINSTEIN 2 | 100 | 50 | 40 | 70 | 35 | 114 | 3 | 16 x 7 | ✓ | EG |
| EINSTEIN 1 – 2 | 200 | 110 | – | 145 | – | 228 | 3 | 16 x 14 | ✓ | EG |
| DARWIN 1 | 32 | 16 | 20 | 27 | 16 | 54 | 3 | 8 x 7 | ✓ | EG |
| DARWIN 2 | 32 | 16 | 20 | 27 | 16 | 56 | 3 | 8 x 7 | ✓ | EG |
| DARWIN 1 – 2 | 70 | 30 | 25 | 50 | 25 | 110 | 3 | 14 x 8 | ✓ | EG |

KONFERENZZENTRUM 2

| | | | | | | | | | | |
|-----------|-----|----|----|----|----|-----|-----|---------|---|----|
| RAFFAEL | 100 | 50 | 40 | 50 | 40 | 117 | 3,4 | 11 x 11 | ✓ | EG |
| TIZIAN | 100 | 50 | 40 | 50 | 40 | 117 | 3,4 | 11 x 11 | ✓ | EG |
| RUBENS | 70 | 40 | 30 | 40 | 30 | 90 | 3,4 | 11 x 8 | ✓ | EG |
| REMBRANDT | 30 | 15 | 10 | 16 | 10 | 40 | 3,4 | 7 x 6 | ✓ | EG |

Alle Angaben in vollen Metern



KONFERENZRAUM THEATER PARLAMENT BLOCK BANKETT U-FORM m² HÖHE MASSE TAGESLICHT ETAGE

KONFERENZZENTRUM 3

| KONFERENZRAUM | THEATER | PARLAMENT | BLOCK | BANKETT | U-FORM | m ² | HÖHE | MASSE | TAGESLICHT | ETAGE |
|---------------|---------|-----------|-------|---------|--------|----------------|------|--------|------------|-------|
| DA VINCI 1 | 45 | 30 | 20 | 36 | 20 | 75 | 2,7 | 13 x 6 | ✓ | 3. OG |
| DA VINCI 2 | 50 | 35 | 20 | 36 | 20 | 75 | 2,7 | 10 x 7 | ✓ | 3. OG |
| DA VINCI 3 | 50 | 35 | 20 | 36 | 20 | 75 | 2,7 | 10 x 7 | ✓ | 3. OG |
| DA VINCI 4 | 20 | 17 | 13 | 18 | 12 | 46 | 2,7 | 7 x 7 | ✓ | 3. OG |
| MEDICI 1 | 20 | 15 | 15 | 18 | 12 | 40 | 2,7 | 6 x 6 | ✓ | 3. OG |
| MEDICI 2 | 30 | 20 | 15 | 27 | 15 | 52 | 2,7 | 7 x 7 | ✓ | 3. OG |
| MEDICI 3 | 15 | 11 | 10 | 9 | 9 | 30 | 2,7 | 6 x 5 | ✓ | 3. OG |
| MEDICI 4 | 20 | 16 | 15 | 18 | 14 | 40 | 2,7 | 7 x 5 | ✓ | 3. OG |
| MEDICI 5 | 20 | 15 | 12 | 9 | 10 | 34 | 2,7 | 7 x 5 | ✓ | 3. OG |
| MEDICI 6 | 15 | 11 | 10 | 9 | 9 | 32 | 2,7 | 7 x 5 | ✓ | 3. OG |

KONFERENZZENTRUM 4

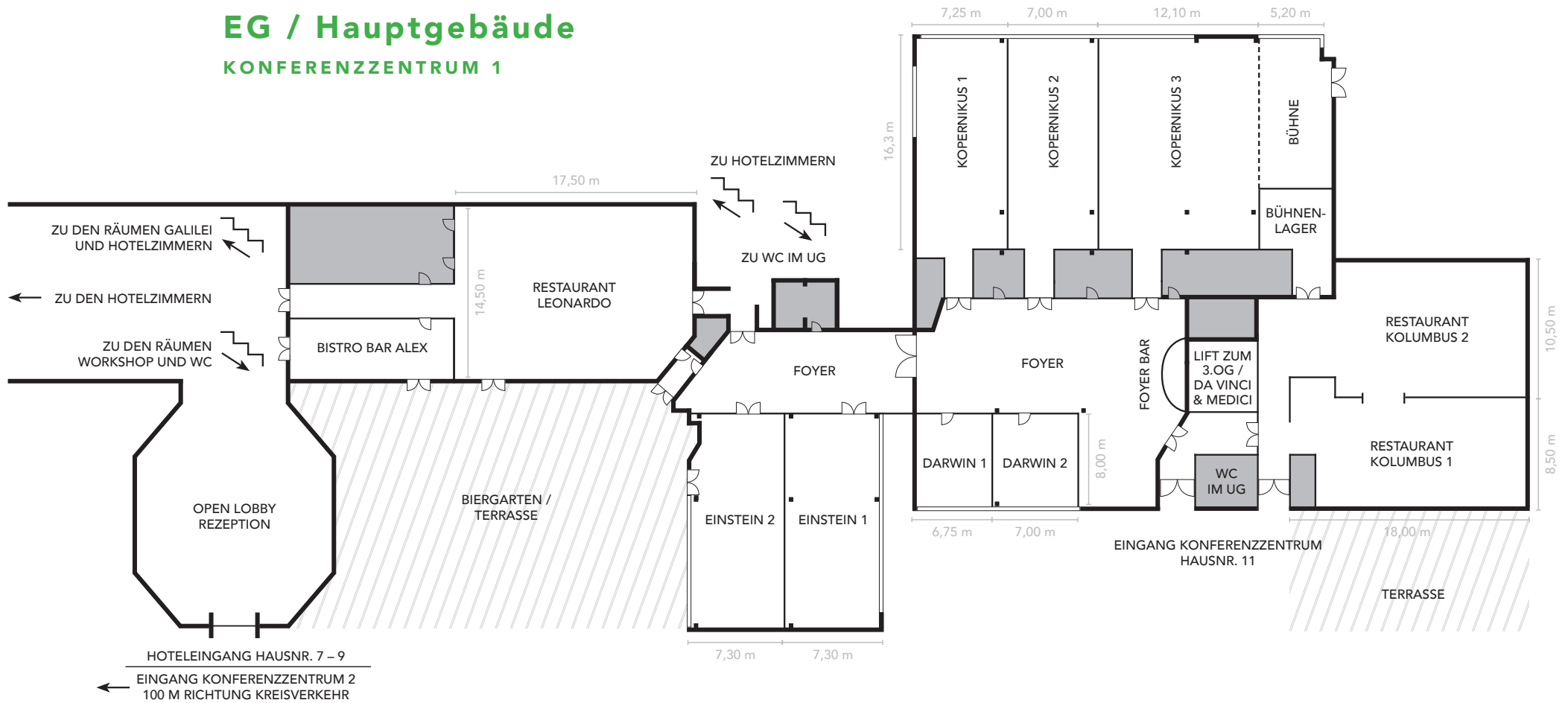
| | | | | | | | | | | |
|---------------|-----|----|----|-----|----|-----|-----|---------|---|-------|
| GALILEI 1 | 70 | 40 | 25 | 40 | 25 | 96 | 3 | 12 x 8 | ✓ | 1. OG |
| GALILEI 2 | 70 | 40 | 25 | 40 | 25 | 96 | 3 | 12 x 8 | ✓ | 1. OG |
| GALILEI 1 – 2 | 170 | 85 | 50 | 100 | 40 | 192 | 3 | 16 x 12 | ✓ | 1. OG |
| WORKSHOP 1 | 13 | 7 | 8 | – | 7 | 22 | 2,5 | 6 x 4 | ✓ | UG |
| WORKSHOP 2 | 13 | 7 | 8 | – | – | 19 | 2,5 | 6 x 3 | ✓ | UG |
| WORKSHOP 3 | 13 | 9 | 14 | – | 10 | 23 | 2,5 | 6 x 4 | ✓ | UG |

Alle Angaben in vollen Metern



EG / Hauptgebäude

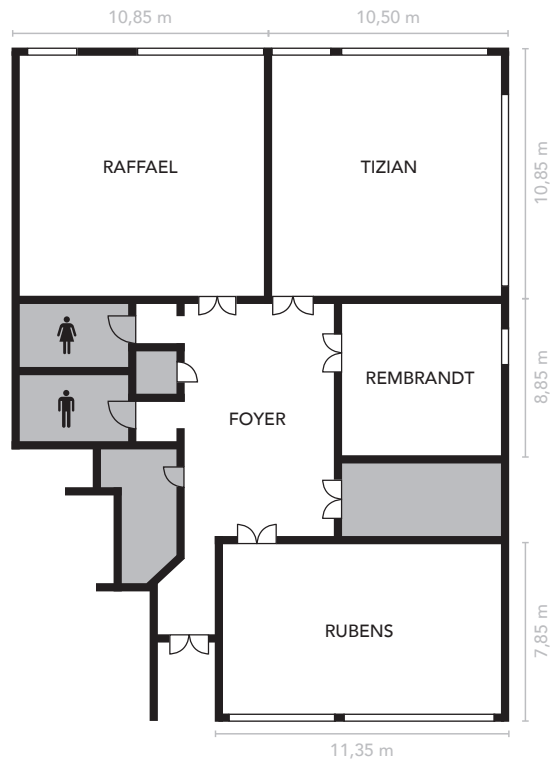
KONFERENZZENTRUM 1



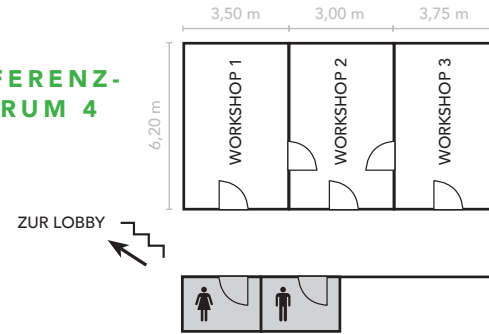
Pläne nicht maßstabsgetreu



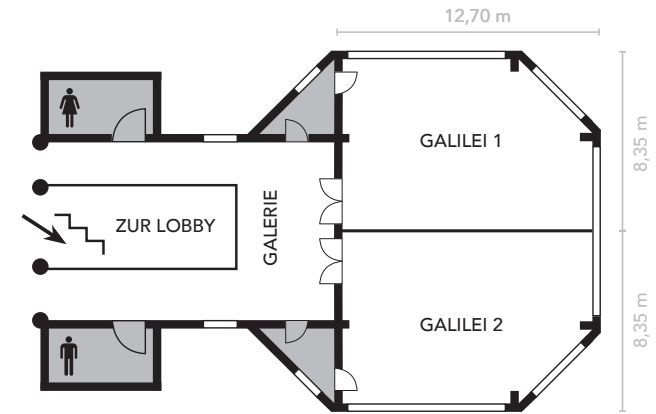
**EG /
Nebengebäude
KONFERENZZENTRUM 2**



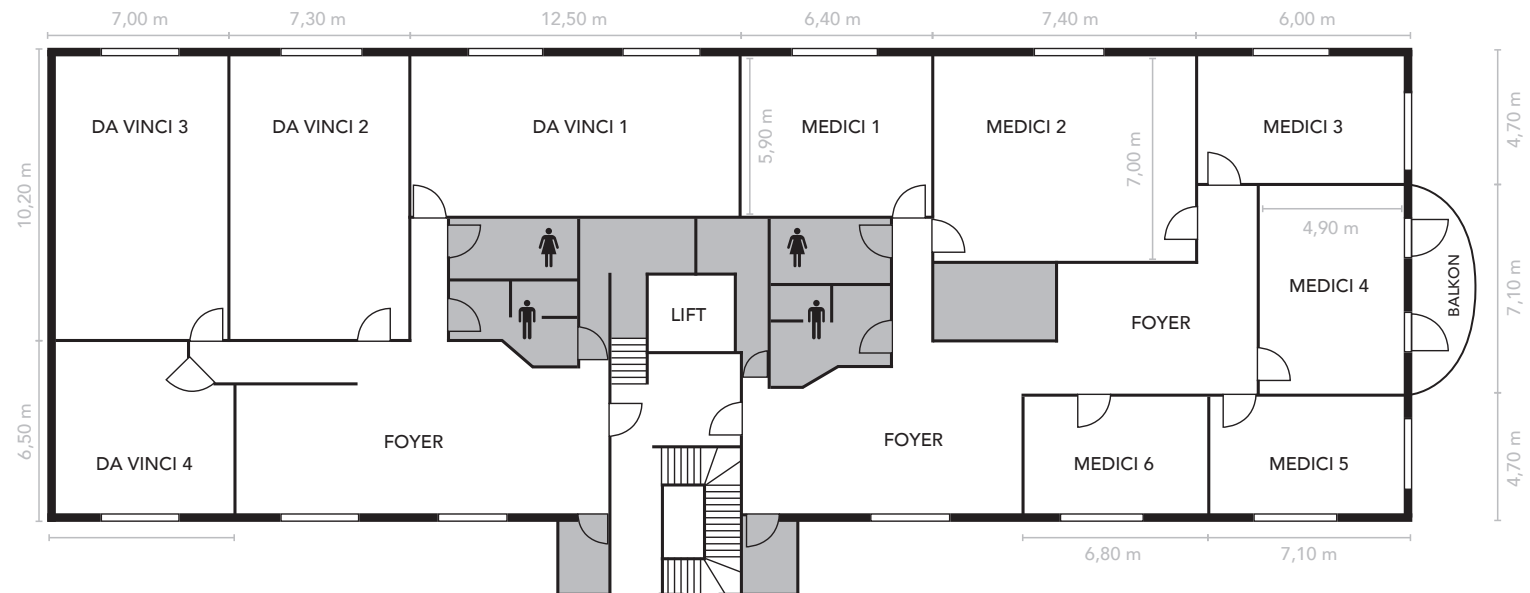
**UG
KONFERENZ-
ZENTRUM 4**



**1.OG
KONFERENZ-
ZENTRUM 4**



**3.OG
KONFERENZZENTRUM 3**



Pläne nicht maßstabsgetreu